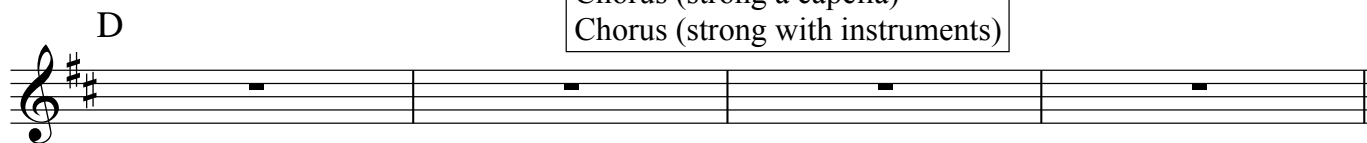


The Poison Train

Michael O'Rourke

Verse 1
 Verse 2 --> Chorus
 Verse 3 --> Chorus
 Verse 4
 Verse 5 --> Chorus
 Final Verse
 Chorus (soft)
 Chorus (strong a capella)
 Chorus (strong with instruments)



S. 1. This old town has had its day, all the peo - ple moved a - way, & the
 2. When the rail-way o-pened here all the gut - ters flowed with beer, & the
 3. Well they built the streets so wide it -'d be a thing of pride, To____
 4. I still hear the tall man say to the child-ren at their play, Now you'd
 5. You feel sor - ry for the grass, all it did was grow too fast, & with



S. hous - es stand-ing emp - ty in the dry & the dus - ty day. No - one
 peo - ple stood be - side the line to____ watch and_ wave & cheer. Oh the
 walk a - cross it drunk or throw a stone to the o - ther side, And the
 bet - ter go home ear - ly and you'd bet - ter____ stay a - way. Stay a -
 wea-pons ranged a - gainst it, it was ne - ver____ meant to last. And the



S. cares for this old town now the mon-ey's not a - round & the
 speech - es that were made when the boss - es smiled & said,_____
 build - ings grew so tall you would trem-ble at their fall, Now they
 way____ from the line can't you hear the rail - way humming, The____
 man and his off - sider, well____ they're all dressed in black, As the



S. rail - way lines are rus - ty____ & the stat - ion's fall - ing down.____
 "Good times are be - gin - ing____ fol - low us & you'll go a - head."____
 all fall down & you'd ne - ver know there was any - one there at all.____
 grass has grown too tall____ and the poi - son train is com ing.____
 poi - son train goes through the town and____ blis - ters all the track.____

15 A D G D A

S. *There's a light down the line let it shine, Lord, let it shine. There's a*

A. *There's a light down the line let it shine, Lord, let it shine. There's a*

T. *There's a light down the line let it shine, Lord, let it shine. There's a*

B. *There's a light down the line let it shine, Lord, let it shine. There's a*

20 Bm G D A Fine

S. *camp down the way, all the fet-lers will be com-ing home to-day.*

A. *camp down the way, all the fet-lers will be com-ing home to-day.*

T. *camp down the way, all the fet-lers will be com-ing home to-day.*

B. *camp down the way, all the fet-lers will be com-ing home to-day.*

Final Verse

24 D G

S. *6. Well it ne-ver last-ed long— half the town was dead & gone; they were*

27 Em A

S. *all just too a-fraid to be left there all a-lone. All the*

29 A G Em

S. *peo-ple stayed a-way and there was no cel-e-bra-tion,—*

31 D G/A D (Back to chorus x 3)

S. *No-bo-dy made a speech the day they closed the rail-way sta-tion.—*